



XP Foamer Japan

Addendum



Directions for use



1. Content

1. Content	2
2. Power supply	3
3. Specifications	3
4. Performance curve	4
5. Recommended spare parts	6

2. Power supply

The power installation must always be in accordance with local legislation regardless what this manual says.

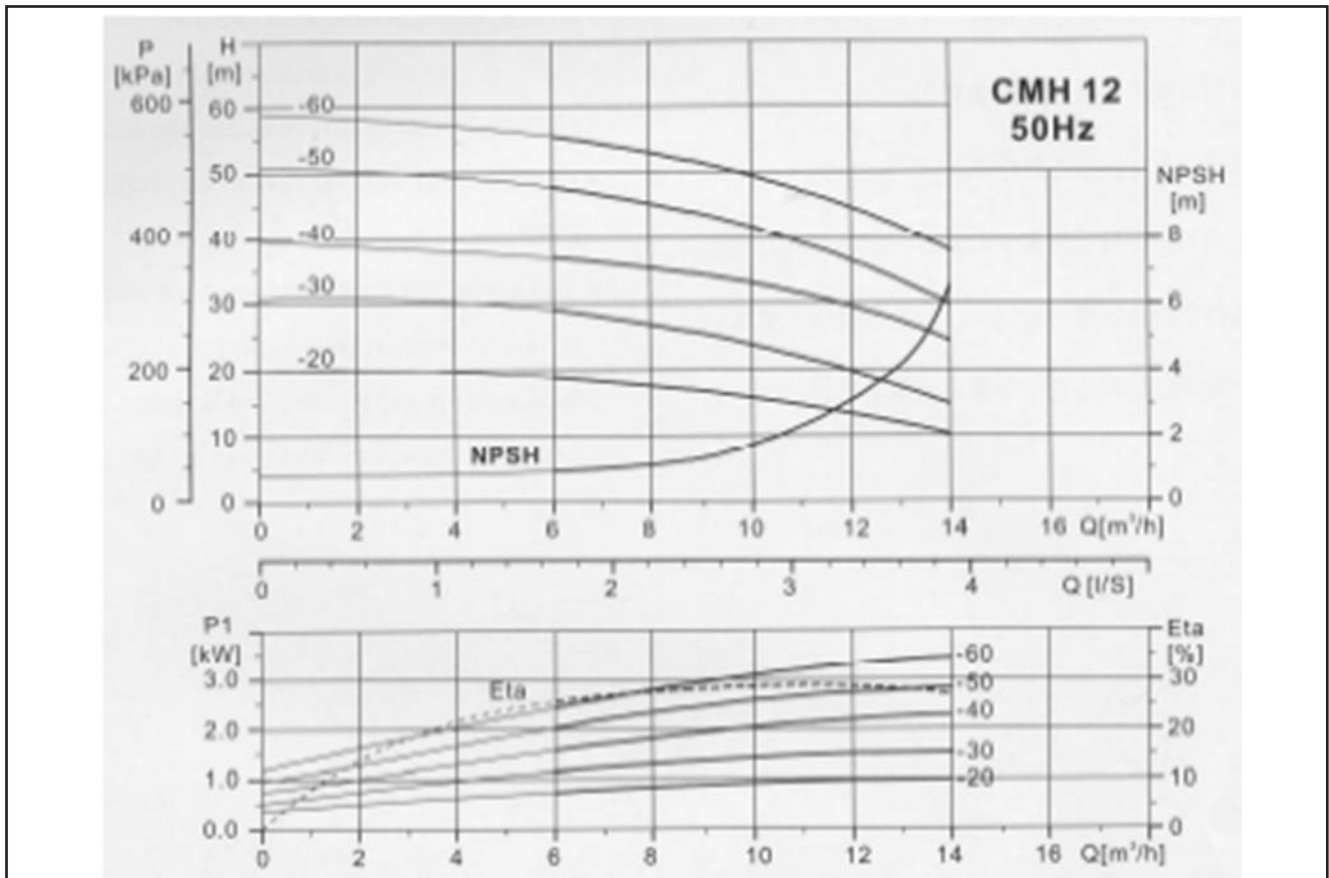
	50/60 Hz version
Voltage:	1x100Vac \pm 10%
Frequency	50/60Hz 62 +0%
Motor load	1kW
Nominal current	11.1 A
Fuse	16 A

3. Specifications

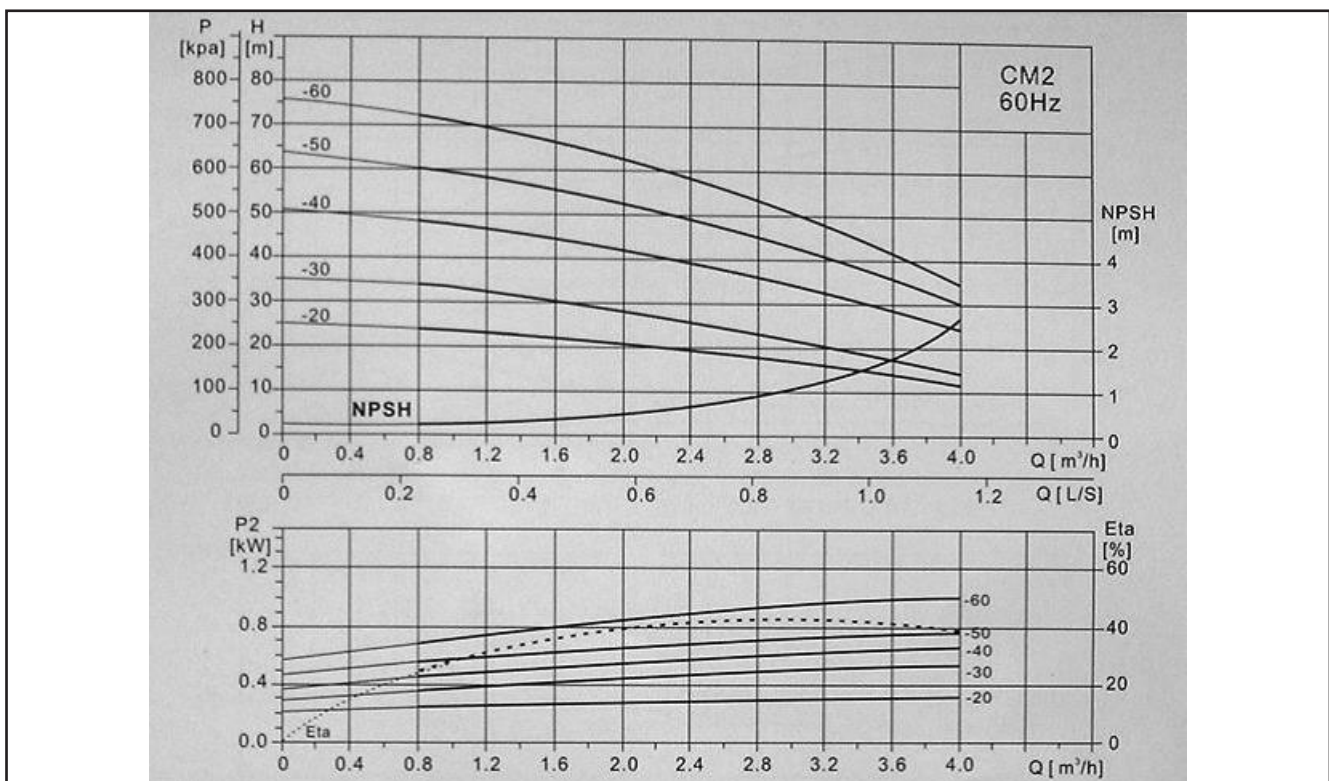
Technical Data		
Water	Units	100Vac 50/60Hz version
Max.Outlet pressure.	PSI - MPa (bar)	124 - 0,85 (8,5)
Consumption during rinsing.	Gal/min - L/min	3-11
Consumption during foaming.	Gal/min - L/min	1,3-58
Min. supply pressure.	PSI - MPa (bar)	29 - 0,2 (2)
Max. supply pressure.	PSI - MPa (bar)	72 - 0,5 (5)
Min. water supply.	Gal/min - L/min	4-15
Max. water temp.	°F - °C	158/70
Pipe dimension inlet Ø	inch	3/4" GHT
Compressed air (build in compressor)		
Air pressure.	PSI - MPa (bar)	72 - 0,5 (5)
Compressed air consumption.	Gal/min - NL/min	6-23
Pipe dimension inlet Ø	mm	
Electricity		
Supply voltage.	V	1/PE 100 Vac \pm 10%
Frequency.	Hz	50Hz \pm 2/60Hz \pm 2
Motor load (kW)	kW	1
Nominal current.	A	10,1
Fuse.	A	15
L1, L2, L3, PE	mm ²	1,5
General		
Sound level ISO 11202	dB	below 70
IP class	IP	54
Dimensions H x B x D	in-mm	19,7x19,7x10,2 500x500x260
Weight.	lbs - kg	66-30
Max. hose length	Ft-m	107Ft-32,6m

4. Performance curve

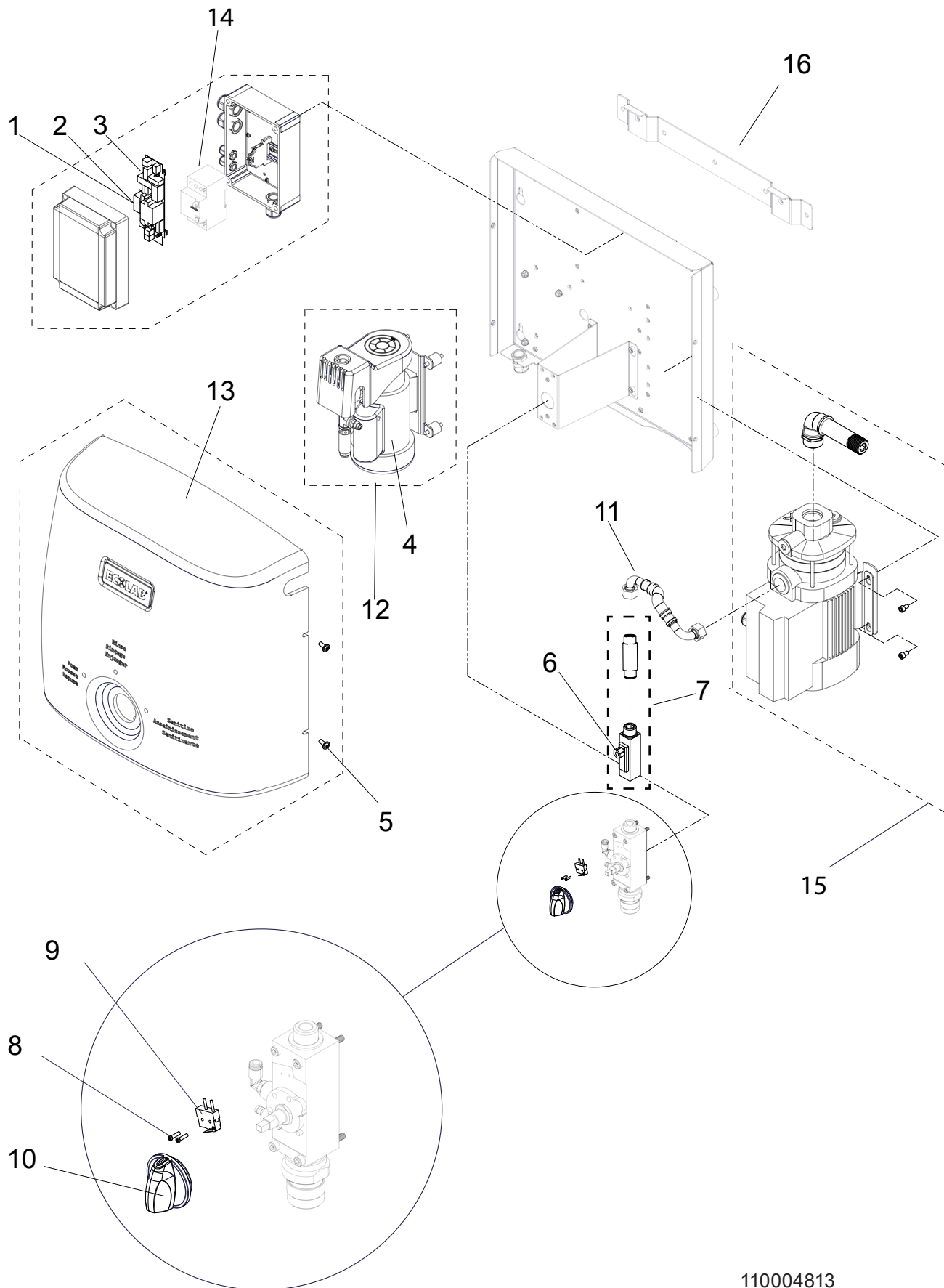
100V/50Hz



100V/60Hz



5. Recommended spare parts



110004813

	Pos./Ref.	No.	No.	Description
	1	110004983		Fuse 15A
	2	110003167	83900070	Fuse 0,315A
	3	110004062	92222864	Control board
	4	110003159	92214026	Hose Teflon
	5	110003168	88020017	Screws for cover
	6	110003165	83050051	Reed switch for flow switch
	7	110004814		Flow switch
	8	110003170	88020018	Screws for compressor switch
	9	110002636	83055100	Compressor switch
	10	110003156	92214011	Selector knob
	11	110005172	85032013	SS braided hose
	12	110004806	84550004	Compressor
	13	110002630	92214058	Cover
	14	110002622	83000600	Thermal overload
	15	110004804	84600115	Pump cpl. (100V/50Hz)
	16	110004805	84600116	Pump cpl. (100V/60Hz)
	17	110002629	92213793	Wall bracket

Printed in Denmark

No.: 110004778G 11/2017

© 2013 All rights reserved

ECOLAB Engineering GmbH,
F & B Engineering Competence Centre EMEA,
Raiffeisenstraße 7,
D-83313 Siegsdorf
Telephone.: (+49) 86 62 /61 0 - Fax: (+49) 86 62 / 61 2 35
e-Mail: engineering-mailbox@ecolab.com

ECOLAB[®]