

Hybrid Mainstation

Addendum to Directions for use

Hybrid Mainstation

To cover:

119000664 Hybrid Mainstation MU621

119000687 Hybrid Mainstation MU622

119000670 Hybrid Mainstation MU421

119000671 Hybrid Mainstation MU422

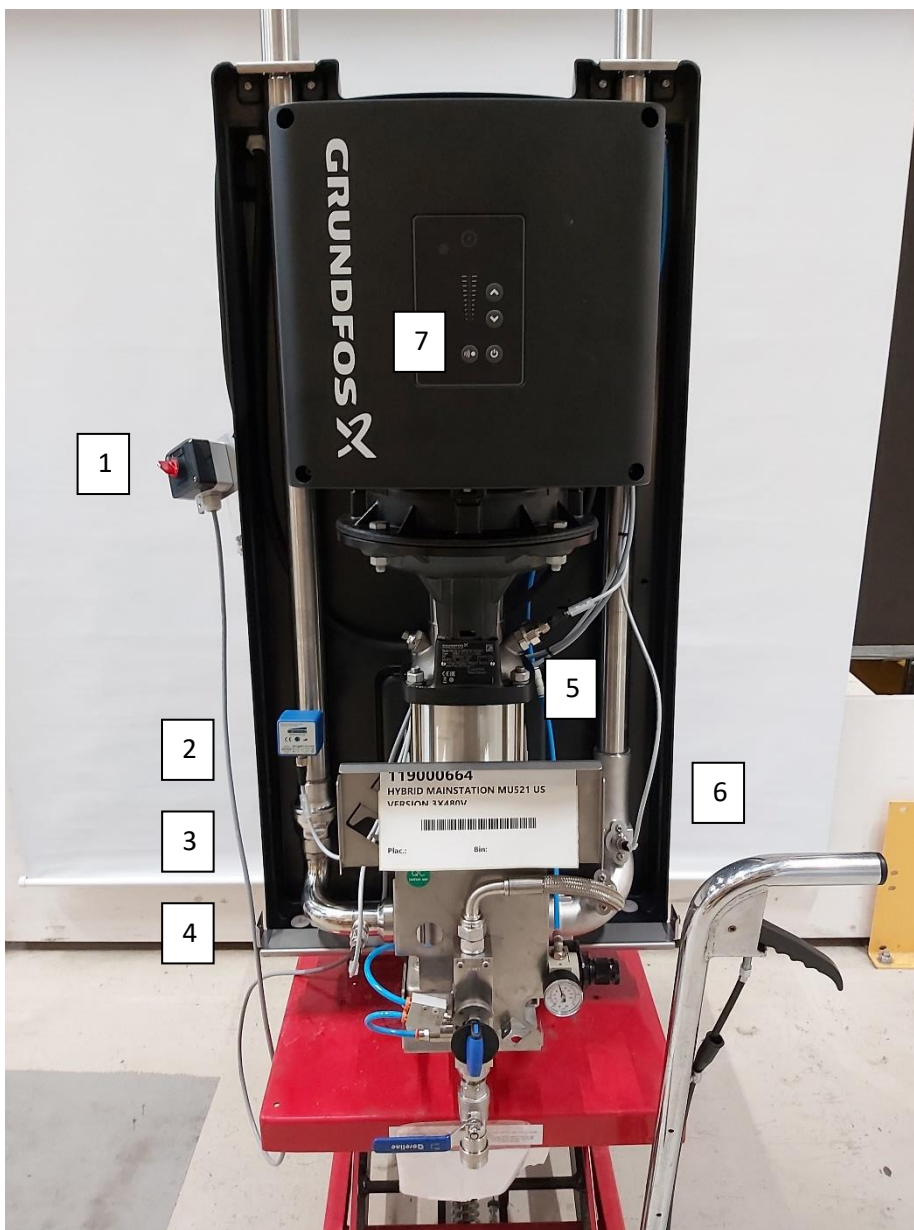
Addendum to Directions for use Hybrid Mainstation Manual to cover item no. 119000664, 119000687, 119000670 and 119000671 Hybrid Mainstation US versions 480V 60Hz.

General direction for use is found in Directions for use Hybrid Mainstation 110003088U.

Hybrid Mainstation US version 480V 60Hz is mounted with the frequency inverter from Grundfos, and for further setup of the Grundfos CRNE we refer to the manual from Grundfos.

Addendum is covering spare part list.

Overview of complete unit



- 1.110003843
ON/OFF switch
- 2.110000973
Flow switch G3 ¼ AISI 316
- 3.630900
Non-return valve 1 ¼"
- 4.110006663
Dry run sensor 0-40 bar 4-20mA ¼"
- 5.110003946
PT1000 temp. sensor
- 6.110006663
Pressure transmitter 0-40 bar 4-20mA ¼"
- 7.110007743
Grundfos CRNE 5-11
3x380-500V 7,5kW
50/60Hz (for 119000664)
- 110007783
Grundfos CRNE 3-11
3x380-500V 5,5kW
50/60Hz (for 119000670 and 119000671)

Specifications

Technical data		
Water	Hybrid Mainstation MU621/622	Hybrid Mainstation MU421/422
Connection type (inlet and outlet)	ISO 228/1-G 1 1/4"	ISO 228/1-G 1 1/4"
Recommended inlet pipe dimension (min.)	2"	1 ½"
Recommended outlet pipe dimension (min.)	2"	1 ½"
Pump pressure	362 psi	362 psi
Operational flow range	2,65-62,00 gpm	2,65-31,70 gpm
Min. inlet pressure	30 psi	30 psi
Max. inlet pressure	120 psi	120 psi
Max. water temperature	175°F	175°F
Electricity		
Power consumption	7,5kW	6,0kW
Nom. current	14,2A	11,5A
Supply	3x 380-500V 50/60Hz	3x 380-500V 50/60Hz
Security of electrical wiring	20A	20A
Electrical cable	4x 2,5mm2	4x 2,5mm2
Air		
Air supply	40Ngpm (5,3 cfm)	40Ngpm (5,3 cfm)
Air pressure	87-145 psi	87-145 psi
Air inlet connection	5/16" push in	5/16" push in
General		
IP class	IP55	IP55
Sound level ISO 11202	Below 70dB	Below 70dB
Weight	350 lbs	300 lbs
Dimensions H x W x D (inches)	42 ¼ x 22 ½ x 17 ¾	42 ¼ x 22 ½ x 17 ¾

The unit is equipped with an ON/OFF switch. When there is an error on the unit, the unit will stop, and the pump itself and the ON/OFF switch will turn red. To reset error turn unit OFF, then ON.

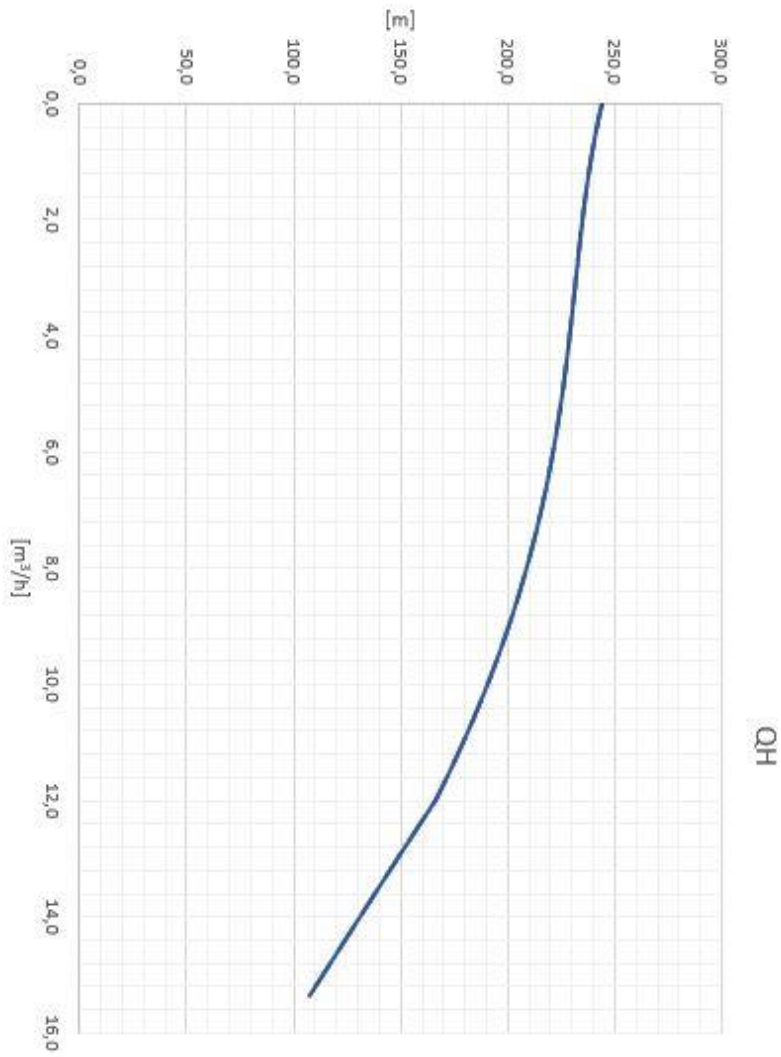
For further information about the error you can connect to the frequency inverter through Grundfos Dongle MI301 and Grundfos GO app (must be downloaded to your phone).

Errors

Limit exceed 1	Temperature is above 175°F
Limit exceed 2	Inlet water pressure is below 30 psi

Pump curve

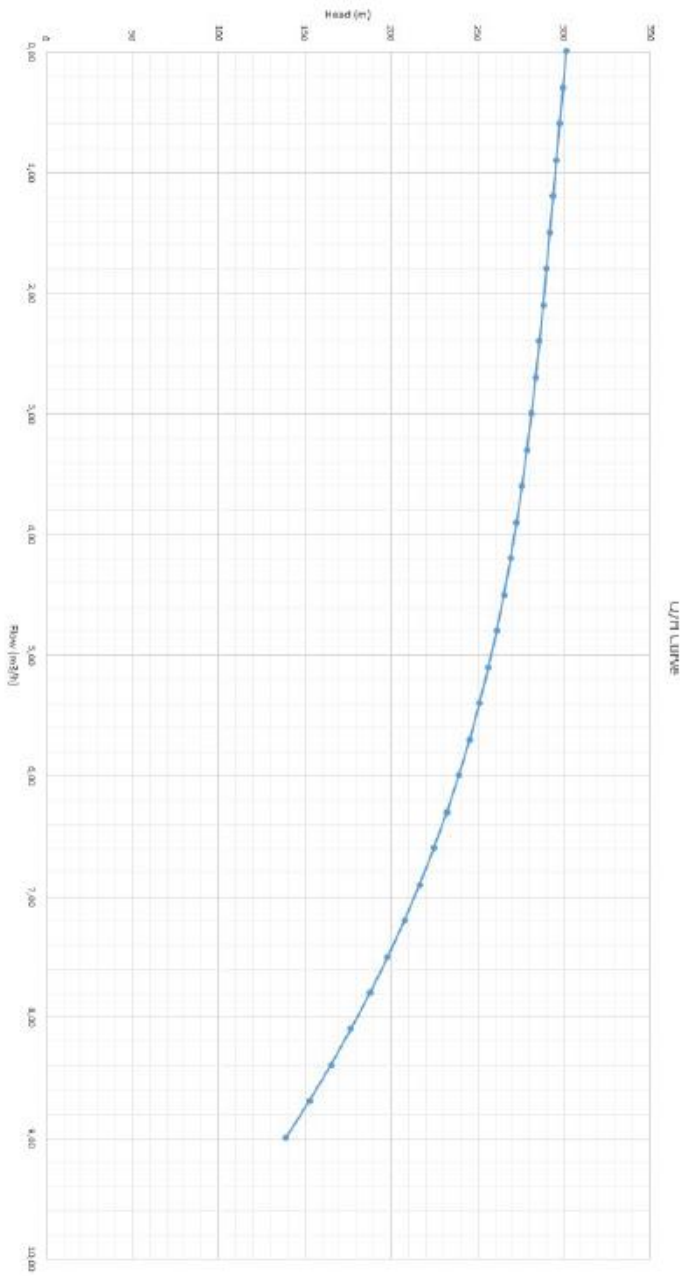
CRNE 5-11 7,5kW



H 250 meters = 362 psi

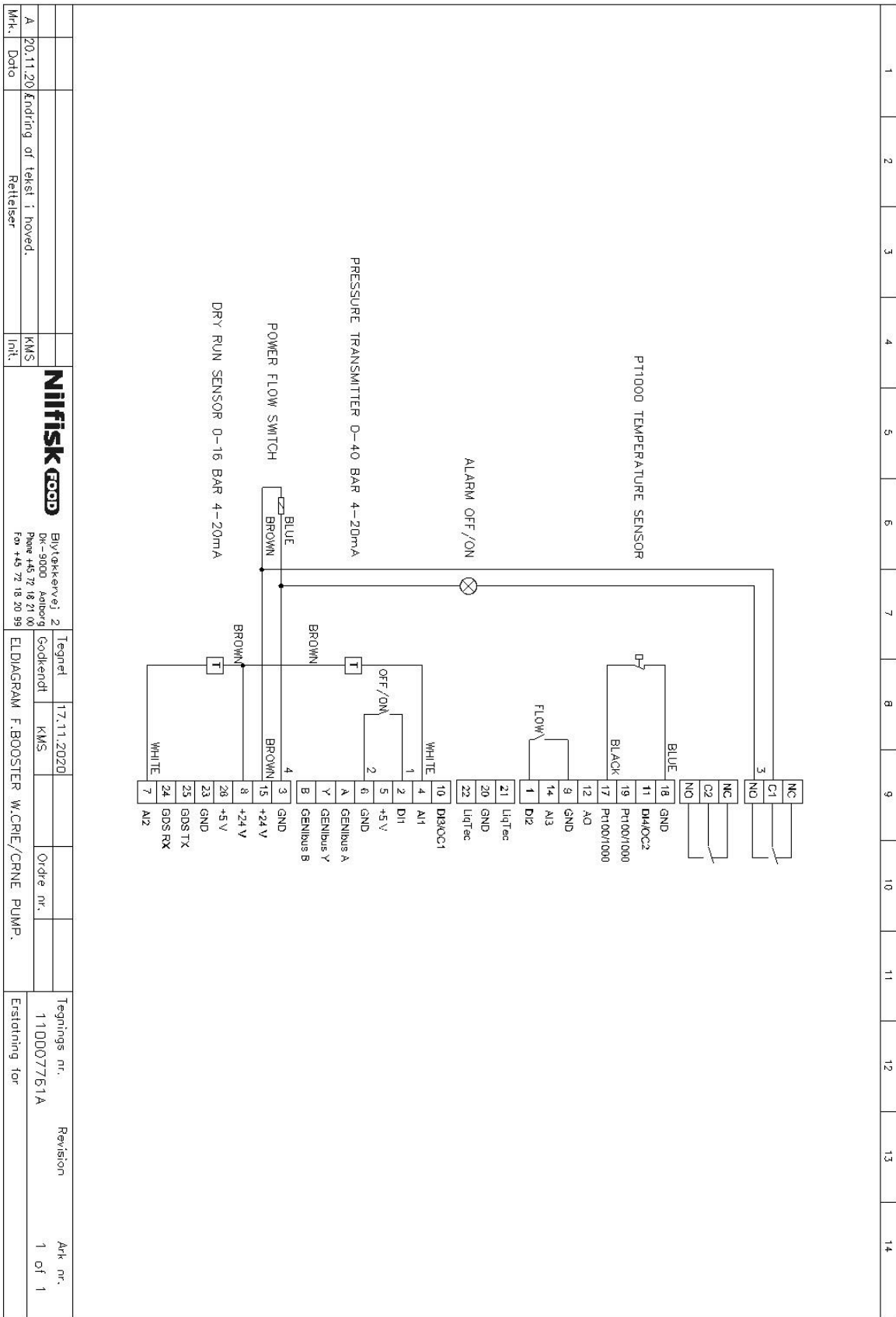
Q 14 m³/h = 62 gpm

CRNE 3-11 5,5kW



H 250 meters = 362 psi
Q7,2 m³/h = 31,7 gpm

Connection diagram - Overview of MGE FME300 for CRNE



Mfr. Data	20.11.20	Findning af tekst i hoved. Retfæiser	KMS	Int.	NIIFISK FOOD	Elytøkkervej 2 DK-9000 Århus Phone +45 72 18 21 00 Fax +45 72 18 20 98	Tegnet Godkendt	17.11.2020	KMS	Ordre nr.	Tegnings nr. 110007761A	Revision	1 of 1
					ELDIAGRAM F. BOOSTER W.CRNE/CRNE PUMP.					Erstatning for			