

475502

Directions for Use
Topax Hygiene System
P3 - Manotizer

475502

Contents		Page
1.	Preface	1
1.0	Application	1
1.1	Special Warnings	1
1.2	Safety Instructions	2
2.	P3 - Manotizer Unit	3
3.	Description of Function	4
3.0	Flow Chart	4
3.1	Print Layout	5
4.	Installation	6
4.0	Directions for Mounting	6
4.1	Electric Connection	7
4.2	Supply of P3 Product	7
5.	Operation Instructions	8
5.0	Symbols	8
5.1	Layout Drawing	9
5.2	Start up Procedures	9
6.	Technical Specifications	10
6.0	Technical Data	10
6.1	Identification Plate	11
7.	Maintenance	12
7.0	Instructions	12
7.1	Trouble Shooting and Remedy	12
7.2	Recommended Spare Parts	13
8.	Components	14
8.0	Drawing of Manotizer with Parts List	14
9.	Warranty	16

1. Preface

The P3 - Manotizer is used for disinfection of hands before entering a production area, and during production.

It is important that your operational staff reads these directions for use prior to installation and start of operation. Operation as laid down in the directions for use will ensure an optimum level of hygiene in your factory and a minimum of maintenance and repair work will arise.

1.0 Application

The P3 - Manotizer is supplied with a peristaltic pump, which supplies the P3 - sanitizer from a 5 l. can through a nozzle. The station is designed for disinfection of hands.

The station is made of corrosion resistant materials, mainly stainless steel, and therefore it is especially suitable for application in the food industry. If you want information of further applications, please contact Ecolab.

The combination of an electronic control unit with an optical sensor and a peristaltic pump makes it possible to spray a preset quantity of disinfectant into the hands.

Furthermore, the electronic control is equipped with an output signal which makes it possible to control the opening of a door, and thereby the use of disinfectant before admission to the production area.

1.1 Special Warnings

The special warnings **CAUTION**, **ATTENTION** and **NOTE** used in this Technical Manual have the following meanings:

CAUTION: This term is used to highlight the fact that complete or even partial failure to properly adhere to operating instructions, working instructions, specified working sequences and similar can cause injuries or accidents.

ATTENTION: This term is used to highlight the fact that complete or even partial failure to properly adhere to operating instructions, working instructions, specified working sequences and similar can cause damage to the equipment.

NOTE: This term is used to draw attention to a particular feature.

1.2 Safety Instructions

- a) Repairs must only be carried out on units when the power supply is switched off.
- b) The P3 - Manotizer is only to be used for disinfection of hands.

ATTENTION! Other parts of the body such as eyes, mouth, hair, etc., must not get in contact with the disinfectant.

CAUTION! Avoid all other use than the one laid down in the instructions.

2. P3 - Manotizer Unit

The P3 - Manotizer is supplied inclusive the wall bracket.

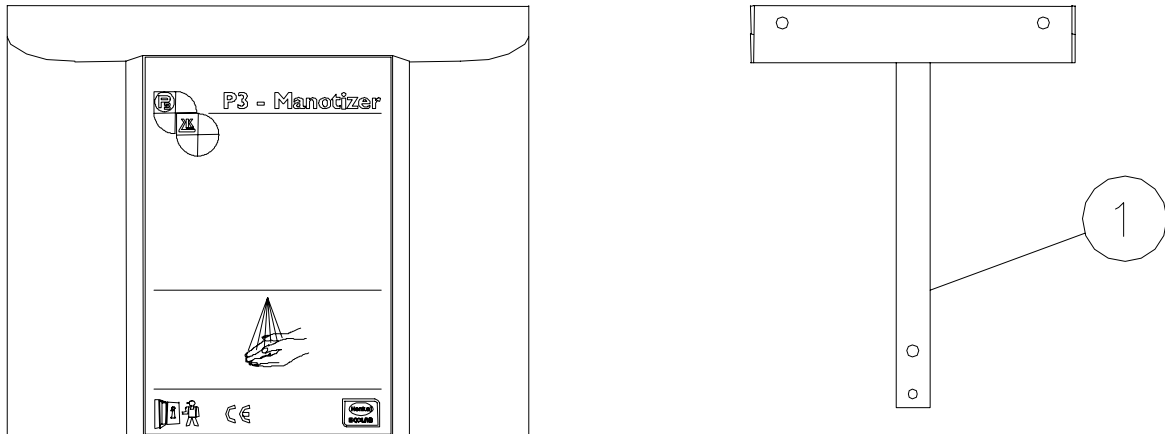


Fig. 2.1

1. Wall bracket.

3. Description of Function

The sensor at the bottom of the P3 - Manotizer is activated when within the preset distance it senses an object. Approx. 0.5 sec. after the activation of the sensor, the peristaltic pump supplies approx. 3 ml of the P3 - product through the nozzle where it is sprayed.

After dosing of the disinfectant an outlet signal of the control unit is activated, which gives admission to e.g. a production room.

NOTE! Prior to disinfection, hands must be cleaned and dry.

3.0 Flow Chart

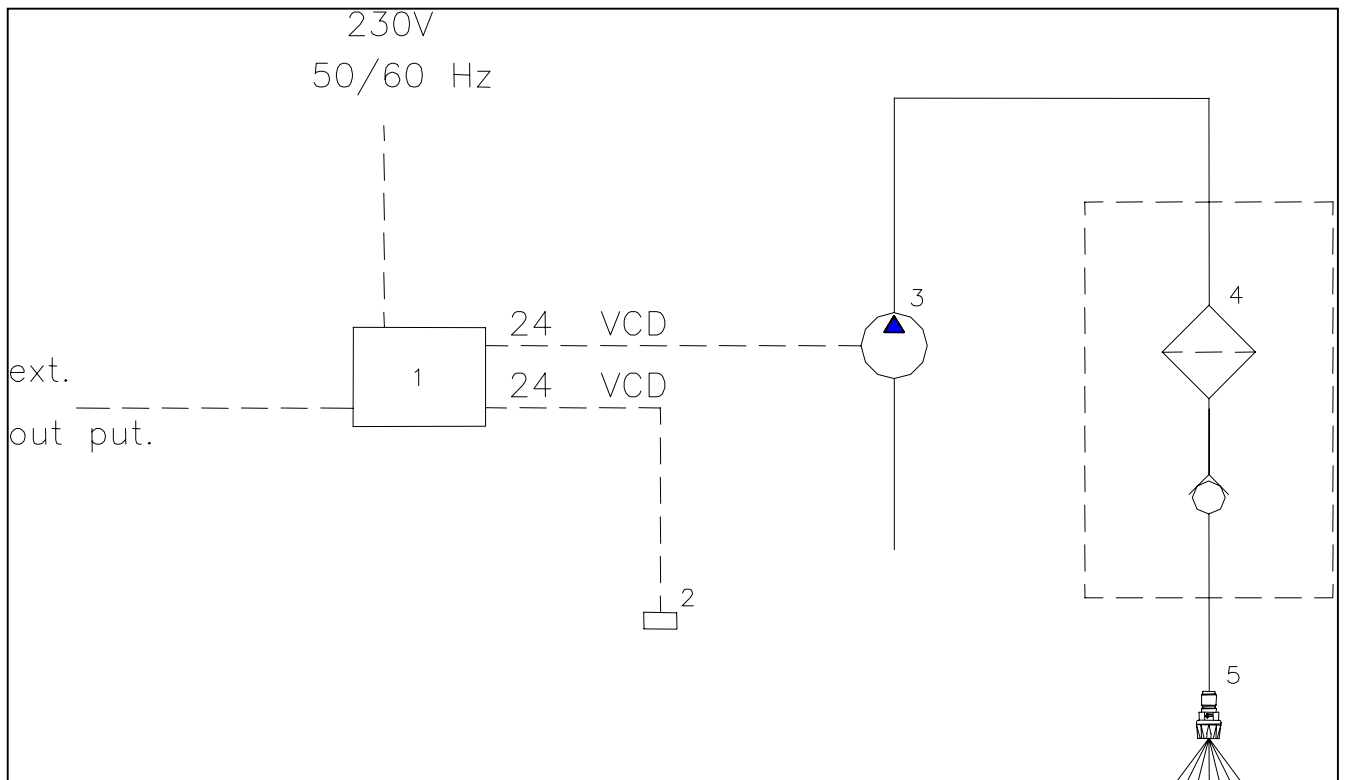
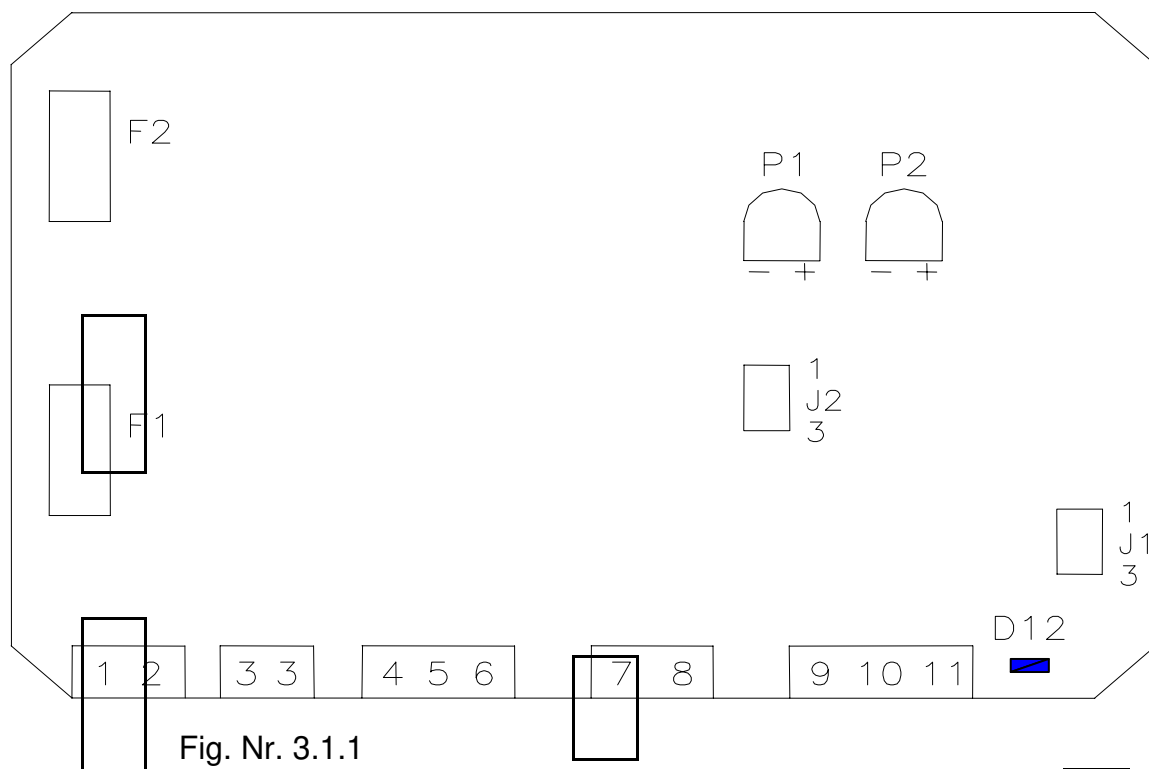


Fig. Nr. 3.0.1

- | | | | |
|----|------------------|----|-------------------------|
| 1. | Electronic box | 4. | Filter/non-return valve |
| 2. | Sensor | 5. | Nozzle |
| 3. | Peristaltic pump | | |

3.1 Print Lay-out



Terminals:

- 1 : Ph. main 230v
- 2 : O,- main 230v
- 3 : Earth
- 3 : Earth
- 4 : Contact N.O. for door
- 5 : Contact N.C. for door
- 6 : Contact Com. for door
- 7 : + 24V DC for pump
- 8 : 0V DC for pump
- 9 : + 24V DC for sensor (brown)
- 10 : Input from sensor (black)
- 11 : 0V DC for sensor (blue)

Indicators:

D12: Sensor active

Sensor type selection:

J1,J2 1-2: PNP type
J1,J2 2-3: NPN type

Timer adjustments:

P1: Spray time 0.5 - 4 sec.
P2: Door release time 0.3 - 20 sec.

Fuses:

F1: Fuse in main terminal.

F2: Fuse in 24 V supply.

4. Installation

4.0 Directions for Mounting

ATTENTION!

- a) The P3 - Manotizer should only be mounted in frost-free rooms.
- b) The P3 - Manotizer can be mounted on a wall or to a separate frame and be anchored to the floor.

For mounting on walls please note the following:

1. The wall for mounting should be of stable brick or concrete construction.
 2. The delivered bracket should be secured to the wall by the delivered screws and corresponding dowels.
- c) The mounting holes for the wall bracket should be drilled according to dimensional sketch below.
 - d) The wall bracket should be mounted on the wall according to the description and the unit installed on the bracket.

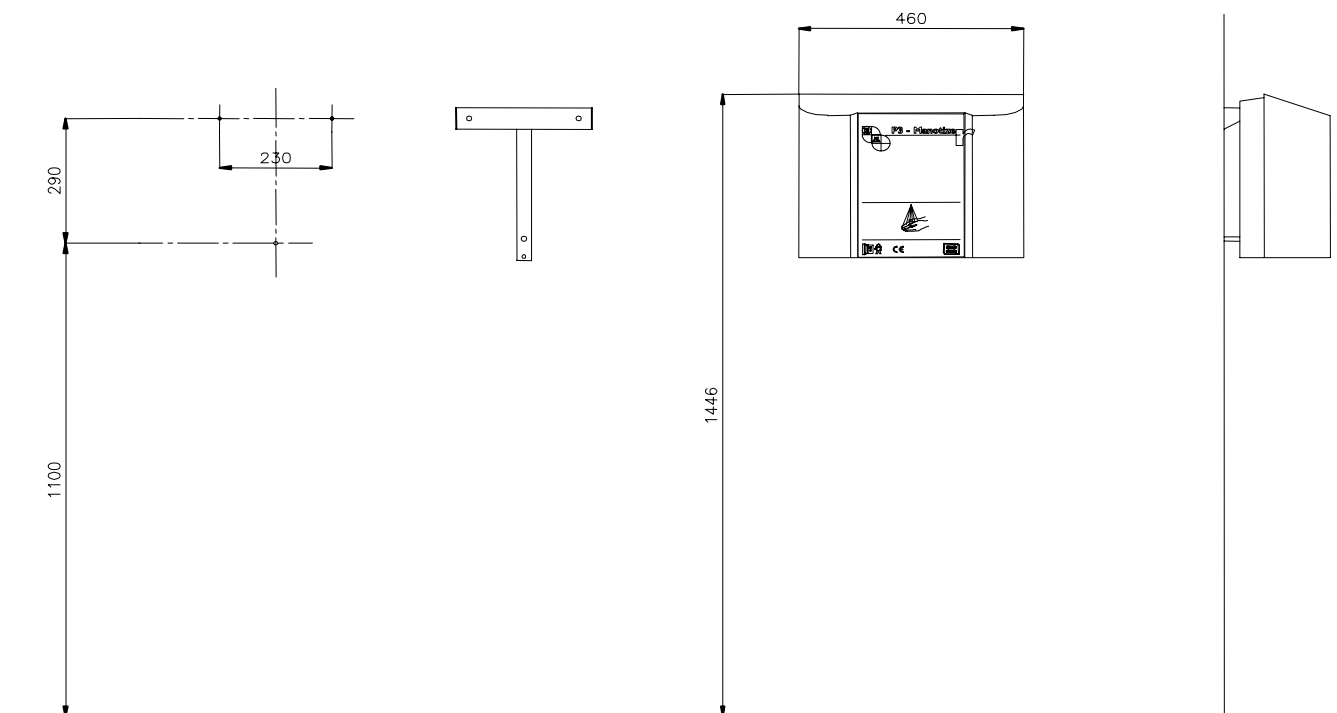


Fig. Nr. 4.0.1

4.1 Electric Connection

CAUTION! Electric connection to be made by an authorised engineer.

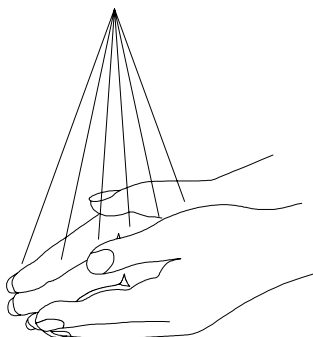
- a) The electric requirements are specified on the identification plate. (Page 11)
- b) It is recommended to protect against earth leakage (0.03 A).

4.2 Supply of P3 Product

- a) Open the front of the P3 - Manotizer with the special key and place the 5 l. can with P3 product inside the cabinet.
- b) Put the suction hose into the 5 l. can below product level and screw on the lid, which is mounted on the hose.
- c) Close the cabinet front with the special key.

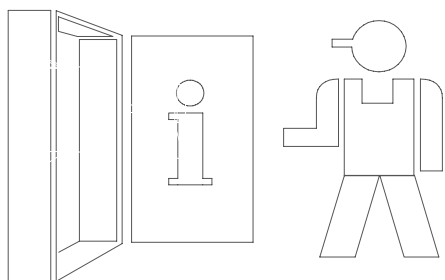
5. Operation Instructions

5.0 Symbols



DISINFECTION

Indicates how to place hands under the P3 - Manotizer for activation.



INFORMATION

Information is placed on the inside of the cabinet door. This manual should always be kept there.

5.1 Layout Drawing

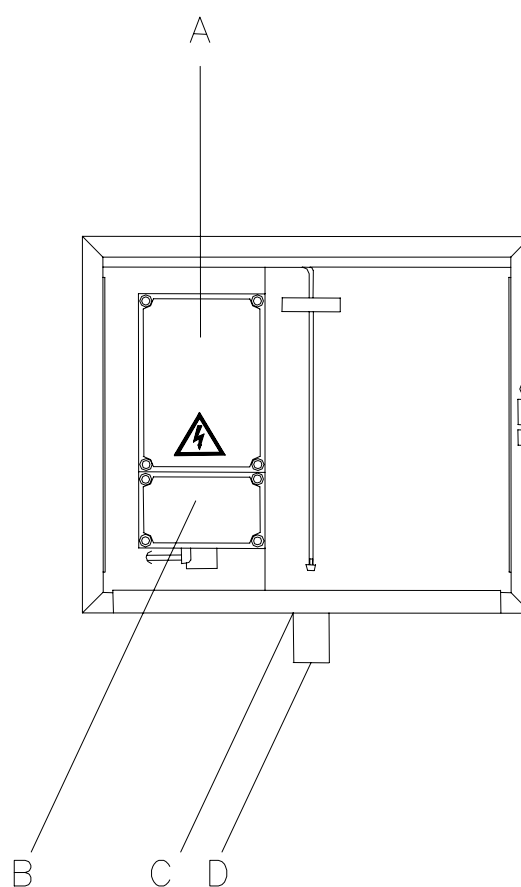


Fig. Nr. 5.1.1

- A. Electric box
- B. Electric box with pump
- C. Sensor
- D. Nozzle with filter/non-return valve

5.2 Start up Procedures

When all supply connections have been made according to chapter 4 and the power is switched on, the P3 - Manotizer is ready for start up.

When the sensor is activated, the P3 - product is sprayed through the nozzle of the P3 - Manotizer.

NOTE! The P3 - Manotizer only operates when the power supply is switched on.

6. Technical Specifications

6.0 Technical Data

Manotizer	Data
Supply voltage	230V +6/-10% 50/60 Hz
Isolation Class	IP 54
Pump motor consumption	24V DC 0.15 A
IR - sensor	24V DC, PNP output
Ambient temperature	0 - 40 °C
Spray timer of pump	0.5 - 4 sec. ± 10%
Door release timer	0.4 - 20 sec. ±10%
Load of output contact	min. 24V DC / 0.1 A max. 230V AC / 2 A
Fuses	F1: T100mA-250V F2: T630mA-250V
Weight	9.3 Kg
Dimensions W x H x D	460 x 380 x 217 mm

6.1 Identification Plate

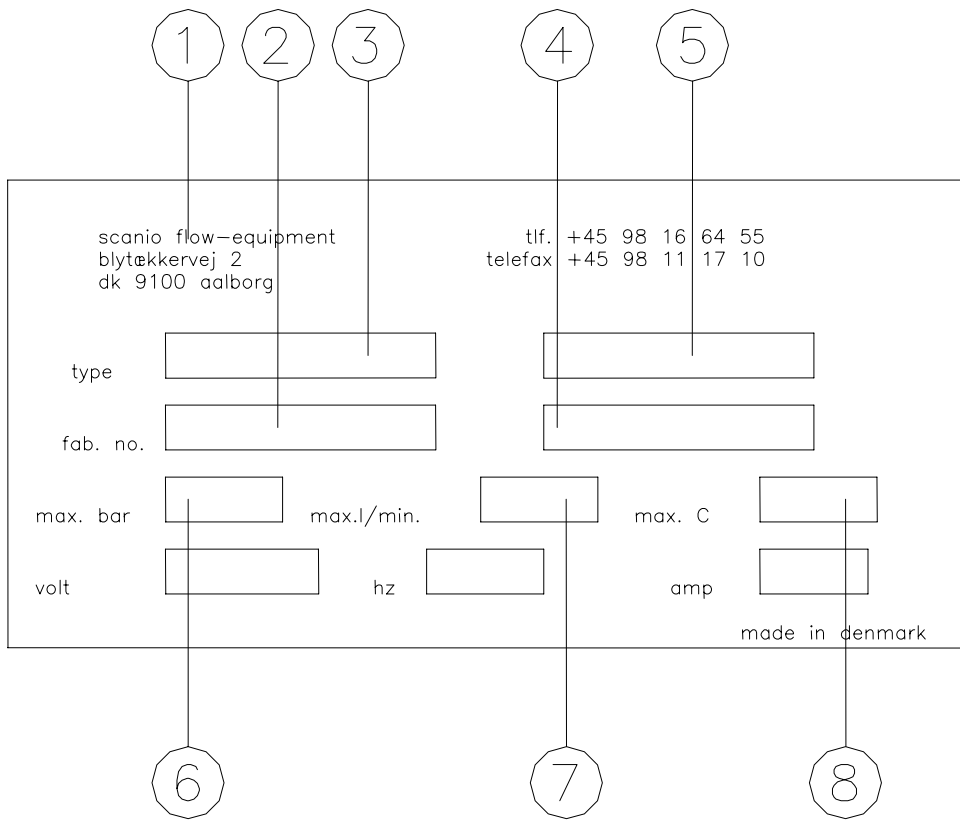


Fig. Nr. 6.1.1

- | | | | |
|----|---------------|----|-----------------------|
| 1. | Producer | 5. | Order number |
| 2. | Serial number | 6. | Voltage |
| 3. | Type | 7. | Frequency |
| 4. | Date | 8. | Consumption of ampere |

7. Maintenance

7.0 Instructions

- a) Depending on usage, at least once a year maintenance should be undertaken by an authorised service engineer in order to prevent defects and failure of operation. Authorised engineers are persons who due to their skilled experience have sufficient knowledge of P3 Systems and are confident with the state work security regulations, accident-preventing regulations, lines and generally acknowledged technical regulations such as DIN-norms and VDE-provisions. Please refer to the service department of Ecolab.

7.1 Trouble Shooting and Remedy

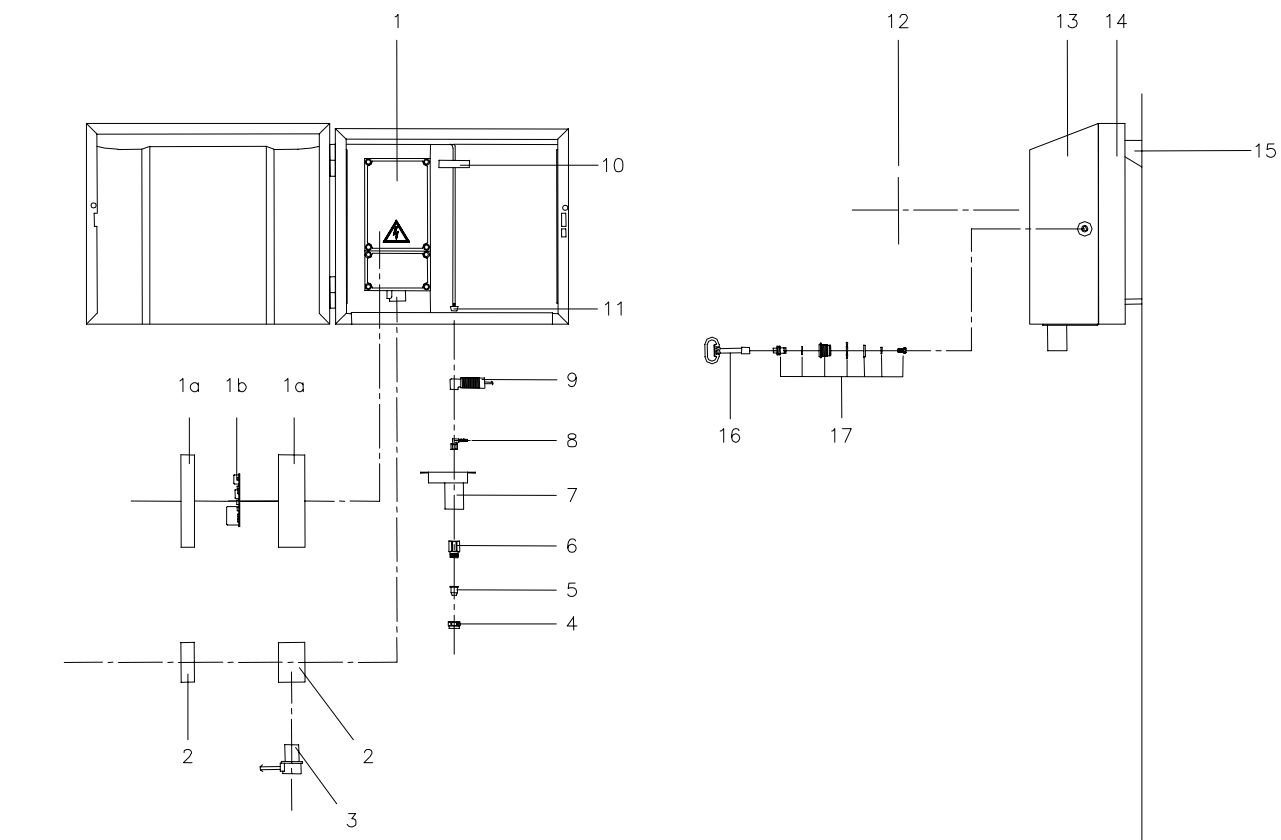
Fault	Cause	Remedy
The pump does not start	No power supply	Switch on power supply
	Fuse blown in print plate	Replace fuse
	Pump motor defect	Replace pump
	Sensor wrongly adjusted	Adjust sensor
	Sensor defect	Replace sensor
The pump does not stop	Controller defect	Replace controller
The pump starts / no spray	No supply of product	Replace can
	Peristaltic pump defect	Replace peristaltic pump
	Nozzle filter blocked	Clean/replace filter

7.2 Recommended Spare Parts

Pos.No.	Article No.	Description	No.
3	340000	Pump, complete	1
6	742000	Filter/non-return valve	1
10	310690	Sensor	1

8. Components

8.0 Drawing of P3 - Manotizer with Parts List



Pos. No.	Article No.	Description	No.
1	310650	Electrical box, complete	1
1a	310660	Electrical control unit	1
1b	310670	Print for control unit	1
2	310680	Electrical box for pump	1
3	340000	Peristaltic pump	1
4	740000	Nozzle cap	1
5	741000	Nozzle	1
6	743000	Nozzle adaptor	1
7	361550	Sensor/nozzle-holder	1
8	371000	Hose nipple, plastic	1
9	310690	Sensor	1
10	371005	Lid for 5 l. product can	1
11	371010	Counterweight for hose	1
12	411900	Front label	1
13	360201	Cabinet door	1
14	361500	Frame	1
15	360300	Wall bracket for cabinet	1
16	652000	Key for lock/door	1
17	65185000	Door lock	1

9. Warranty

ATTENTION!

Our guarantee is given for a period of 12 months from delivery for all parts which have become unfit for use due to material or manufacturing defects. The guarantee will consist of reimbursement, replacement or repair of the defective or damaged part at our works. Installation and freight costs are charged. Any defective parts are to be placed at our disposal. Claims that may otherwise be raised for any legal reason will not be acknowledged. No liability will be accepted for damage occurred indirectly. The purchaser has no right to let any third party repair possible defects on our account. All hoses, rubber parts or synthetic materials, natural wear as well as damage caused by careless and inappropriate treatment, including transport damage are not covered by the guarantee. Further, the guarantee does not apply if the station has been subjected to frost. The obligation of guarantee compensation disappears if changes or repairs are made by non-authorized persons. Claims under the guarantee will only be acknowledged when they are placed immediately after the defect has been noticed. The guarantee ceases in case of change of ownership. The dealer cannot be held responsible for personal injury, damage to equipment, working deficits, including production loss, loss of profits, loss of stock or the like which may occur by imperfect and delayed delivery of the sold product, regardless of the reason, including manufacturing and material defects. Please see our standard conditions of sale and delivery.