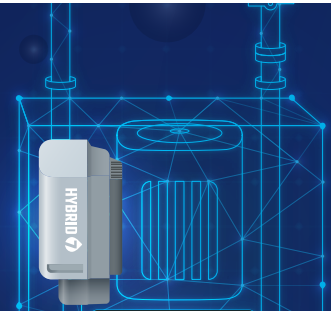


# H7 BOOSTER FLOOR

Innovative pump stations used for Open Plant Cleaning



Hybrid 7 Boosters Floor are innovative pump stations that boost water pressure used for Open Plant Cleaning, Automated and Centralized cleaning in the Food & Beverage industry.

By embracing guided service, remote support and having components optimized to satisfy needs of the food and beverage industry, with this pump stations you will maximize performance, improve energy efficiency, contribute to sustainability, and decrease downtime in your food and beverage production facility.

Hybrid 7 Booster Floor BF4 is a floor mounted pump station, with capacity to supply pressurized water to 4 simultaneous users, operating 4 satellites.

Hybrid 7 Booster Wall BF 8 is a floor mounted pump station, with capacity to supply pressurized water to 8 simultaneous users, operating 8 satellites.

# 7 Benefits of Hybrid 7

## Connectivity



## Optimized F&B



## Modularity



## Remote support



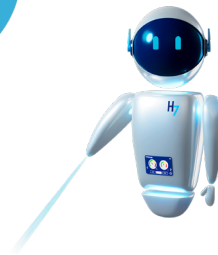
## Sustainability



## Guided service



## Savings



# HYBRID 7 Booster Floor



Innovative pump stations used for Open Plant Cleaning



General	Unit	BF4	BF8
Dimensions HxWxD	mm [inches]	1210x535x392 [47.5x21x15]	1210x535x392 [47.5x21x15]
Weight	kg [lbs]	56 [125]	111 [245]
IP class		55	55
<b>Water</b>			
Max. outlet pressure	MPa/bar [psi]	2+inlet max. 2.5 20+inlet max. 25 [290+inlet max. 362]	2+inlet max. 2.5 20+inlet max. 25 [290+inlet max. 362]
Operational flow range	L/min [gal/]	10/120 [2.6-31.7]	10/240 [2.6-63]
Min. supply pressure	MPa/bar [psi]	0.2/2 [29]	0.2/2 [29]
Max. supply pressure	MPa/bar [psi]	0.8/8 [116]	0.8/8 [116]
Min. water supply	L/min [gal/]	120 [31.7]	240 [63]
Max. water temperature	C° [F]	70 [158]	70 [158]
Pipe dimension inlet Ø	mm [inches]	38 [1.49]	38 [1.49]
Pipe dimension outlet Ø	mm [inches]	38 [1.49]	38 [1.49]
Clamp connection (ferrule)		CLAMP FERRULE DIN 32676 Ø50,5	CLAMP FERRULE DIN 32676
<b>Electricity</b>			
Supply voltage	V	3/PE 380-528Vac	3/PE 380-528Vac
Frequency	Hz	50/60	50/60
Motor load	kW	5.5	11
Max. total load	kW	6	11.5
Nominal current	A	14.2	27
Fuse	A	20	32
Security of electrical wiring	A	16	35
Electrical cable L1, L2, L3, PE	mm2	4x2.5	4x6.0

Model	Article no	EBS no
Hybrid 7 Booster Floor BF4	110007222	10062136
Hybrid 7 Booster Floor BF8	110007223	10062135



**Need more info?** Visit [Nilfiskfood.com](http://Nilfiskfood.com) for more details including video tutorials and more.