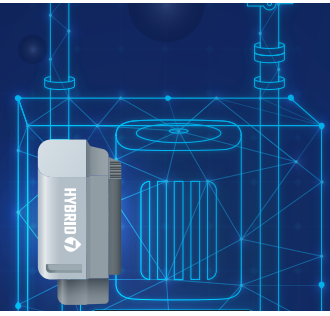


# H7 BOOSTER WALL

Best-in-class pump stations that boost water pressure used for Open Plant Cleaning



Hybrid 7 Boosters Wall are the best-in-class pump stations that boost water pressure used for Open Plant Cleaning, Automated and Centralized cleaning in the Food & Beverage industry.

By embracing guided service, remote support and having components optimized to satisfy needs of the food and beverage industry, with this pump stations you will maximize performance, improve energy efficiency, contribute to sustainability, and decrease downtime in your food and beverage production facility.

Hybrid Booster Wall 4 is a wall mounted pump station, with capacity to supply pressurized water to 4 simultaneous users, operating 4 satellites.

Hybrid Booster Wall 7 is a wall mounted pump station, with capacity to supply pressurized water to 7 simultaneous users, operating 7 satellites. Both Hybrid models have Stainless Steel cover and closed, hygienic design of the cover and backplate.

Hybrid Compact Pegasus Booster Wall 4 is a wall mounted pump station, with capacity to supply pressurized water to 4 simultaneous users, operating 4 satellites. This model has an ABS cover, and open design of the backplate.

# 7 Benefits of Hybrid 7

## Connectivity



## Optimized F&B



## Modularity



## Remote support



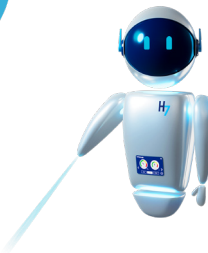
## Savings



## Sustainability



## Guided service



# H7 Booster Wall BH4/BP4/BH7

Best-in-class pump stations that boost water pressure used for Open Plant Cleaning

General	Unit	BH4	BP4	BH7
Dimensions HxWxD	mm [inches]	1260x550x392 [49x22x15]	1260x550x392 [49x22x15]	260x550x392 [49x22x15]
Weight	kg [lbs]	100 [220]	85 [187]	120 [264]
IP class		55	55	55

## Water

Max. outlet pressure	MPa/bar [psi]	2+inlet max. 2.5 20+inlet max. 25 [290+inlet max. 362]	2+inlet max. 2.5 20+inlet max. 25 [290+inlet max. 362]	2+inlet max. 2.2 20+inlet max. 22 [290+inlet max. 319]
Operational flow range	L/min [gal/min]	10/120 [2.6-31.7]	10/120 [2.6-31.7]	10-210 [2.6-55]
Min. supply pressure	MPa/bar [psi]	0.2/2 [29]	0.2/2 [29]	0.2/2 [29]
Max. supply pressure	MPa/bar [psi]	0.8/8 [116]	0.8/8 [116]	0.8/8 [116]
Min. water supply	L/min [gal/min]	120 [31.7]	120 [31.7]	210 [55]
Max. water temperature	C° [F]	70 [158]	70 [158]	70 [158]
Pipe dimension inlet Ø	mm [inches]	38 [1.49]	38 [1.49]	38 [1.49]
Pipe dimension outlet Ø	mm [inches]	38 [1.49]	38 [1.49]	38 [1.49]
Clamp connection (ferrule)		CLAMP FERRULE DIN 32676 Ø50,5	CLAMP FERRULE DIN 32676 Ø50,5	CLAMP FERRULE DIN 32676 Ø50,5

## Electricity

Supply voltage	V	3/PE 380-528Vac	3/PE 380-528Vac	3/PE 380-528Vac
Frequency	Hz	50/60	50/60	50/60
Motor load	kW	5.5	5.5	10
Max. total load	kW	6	6	10.5
Nominal current	A	14.2	14.2	27
Fuse	A	20	20	35
Security of electrical wiring	A	16	16	35
Electrical cable L1, L2, L3, PE	mm <sup>2</sup>	4x2.5	4x2.5	4x6.0

Model	Article no	EBS no
Hybrid 7 Booster Wall BH4	110008540	10062134
Hybrid 7 Booster Wall BP4	110007225	10062130
Hybrid 7 Booster Wall BH7	110007060	10062132



**Need more info?** Visit [Nilfiskfood.com](https://www.nilfiskfood.com) for more details including video tutorials and more.