



Hybrid Typhoon

Addendum to Directions for use

Hybrid Typhoon

110004486/110004487

Addendum to Directions for use Hybrid Typhoon 110004486 and 110004487 to cover item no. 119000658 Hybrid Typhoon U 3x 380-500V 50/60Hz without compressor

General direction for use is found in Directions for use Hybrid Typhoon 110004486 or 110004487.

119000658 is mounted with the frequency inverter from Grundfos, and for further setup of the CRNE 1-27 we refer to the manual from Grundfos.

Addendum is covering spare part list for some parts that are different from standard Hybrid Typhoon.

Specifications

Technical data	
Water	Hybrid Typhoon CRNE 1-27
Connection type inlet	¾" quick coupler
Connection type outlet	¾" quick coupler
Pump pressure	21 bar (304,5 psi)
Operational flow range	Max. 50 l/min (Max. 13,2 US gpm)
Min. inlet pressure	2 bar (29 psi)
Max. inlet pressure	8 bar (116 psi)
Max. water temperature	80°C (176°F)
Air	
Min./max. air pressure	0,6-1Mpa/6-10 bar (87-145 psi)
Compressed air consumption	200 NI/min (7 cfm)
Electricity	
Power consumption	2,2kW
Nom. current	4,15-3,40
Supply	3x 380-500V 50/60Hz
Security of electrical wiring	16A
General	
IP class	IP55
Sound level ISO 11202	Below 70dB
Weight	125 kg (275 lbs)"
Dimensions H x W x D (mm)	690 x 1445 x 1030 mm (27 1/5" x 57" x 40 1/2")

The unit will start and stop via the built-in flow switch. This is the same as on a standard Hybrid Typhoon.

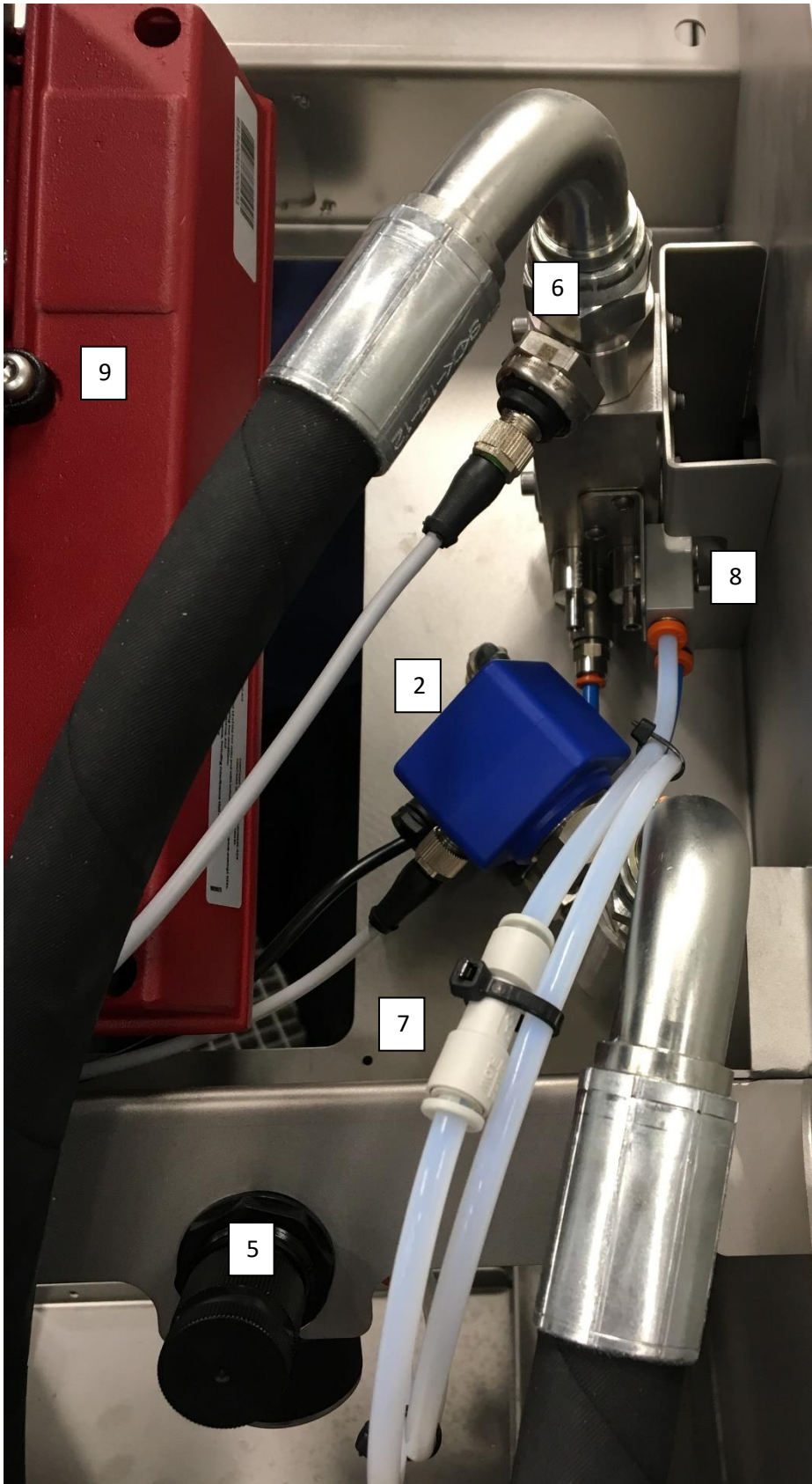
The unit is equipped with an ON/OFF switch. When there is an error on the unit, the unit will stop, and the pump itself and the ON/OFF switch will turn red. To reset an error turn unit OFF, then ON.

For further information about the error, you can connect to the frequency inverter through Grundfos Dongle MI301 and Grundfos GO app (must be downloaded to your phone).

The unit is without compressor, which means it must be connected to air supply at the factory. The unit is supplied with a quick connector for air supply.

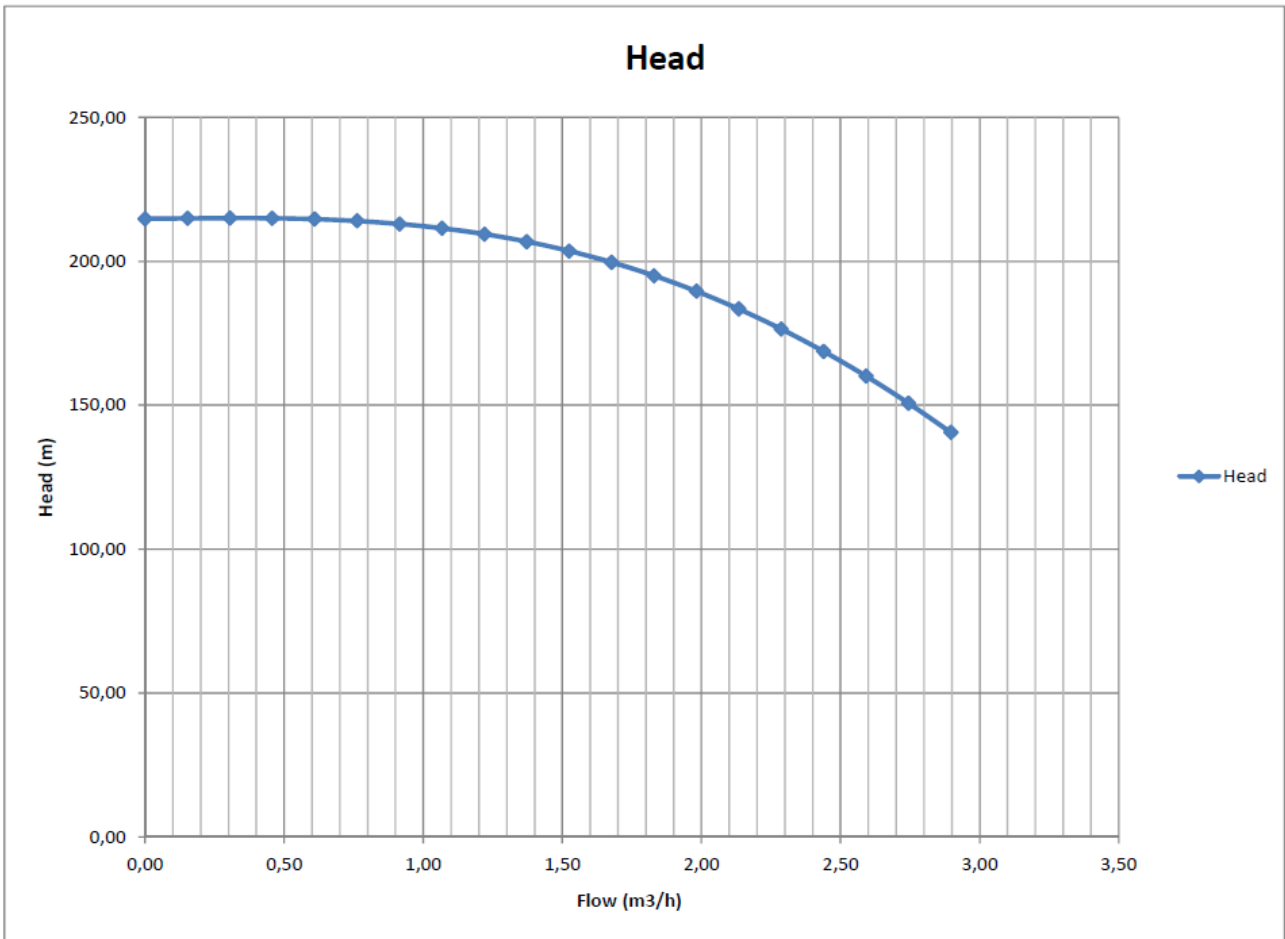
When the change-over handle is in foam position air will automatically flow to the block to generate foam (given that the unit is connected to the air supply at the factory). Air pressure can be regulated through the built-in air regulator.

Overview of parts

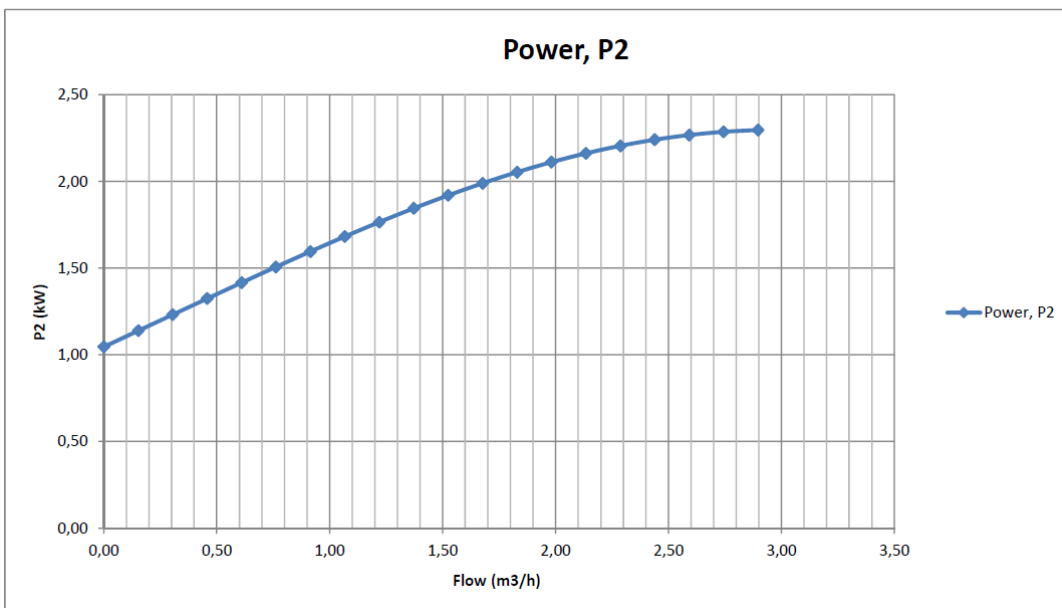


1. 110003843 (not pictured)
ON/OFF switch
2. 110000973
Flow switch G3 ¼ AISI 316
3. 0331030 (not pictured)
Dry run sensor ¼"
4. 110003946 (not pictured)
PT1000 temp. sensor
5. 110002788
Air regulator w. gauge
6. 110006663
Pressure transmitter 0-40
bar 4-20mA ¼"
7. 0608135
Non-return valve for air
8. 110003282
Air valve complete
9. 110007153
Grundfos CRNE 1-27
3x380-500V 2,2kW
50/60Hz

Pump curve

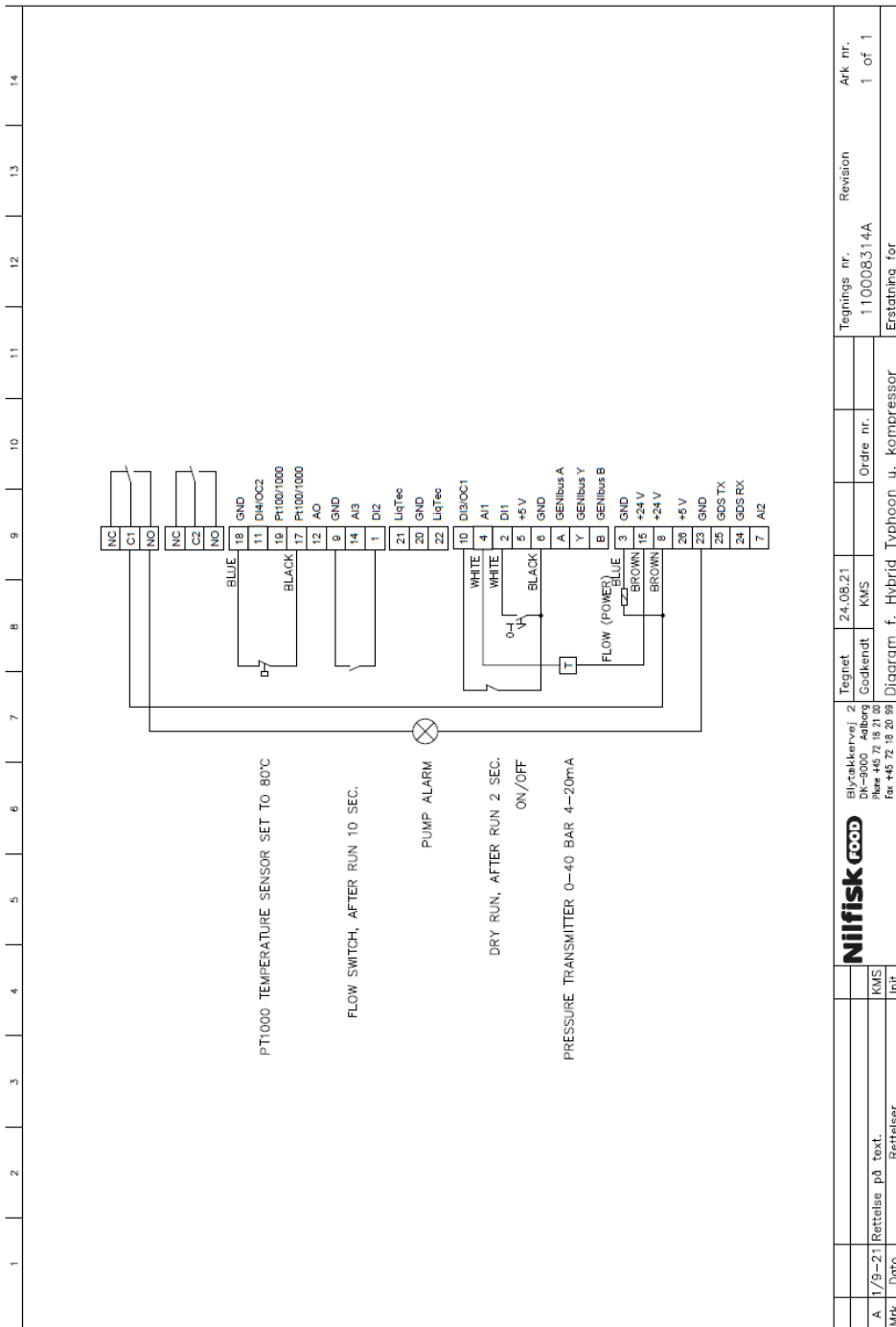


Power curve



Connection diagram

Overview of MGE FME300 for CRNE 1-27



Tegnet		24.08.21	Revision		Ark nr.
Godkendt		KMS	110008314A		1 of 1
Diagram f.		Hybrid Typhoon u. kompressor			
Tegnet		24.08.21	Revision		Ark nr.
Godkendt		KMS	110008314A		1 of 1
Diagram f.		Hybrid Typhoon u. kompressor			
Blyskærvej 2					
DK-9000, Aalborg					
Tlf: +45 72 18 20 99					
Fax: +45 72 18 20 99					
KMS					
Init.					
Rettelser					
A 1/3-21					
Rettelser på tekst					
Mrk. Dato					