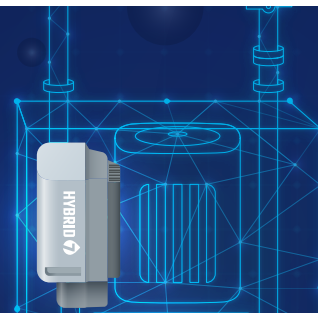


H7 MULTI BOOSTER

Innovative pump stations



Hybrid 7 Multi Boosters are innovative pump stations that boost water pressure used for Open Plant Cleaning, Automated and Centralized cleaning in the Food & Beverage industry.

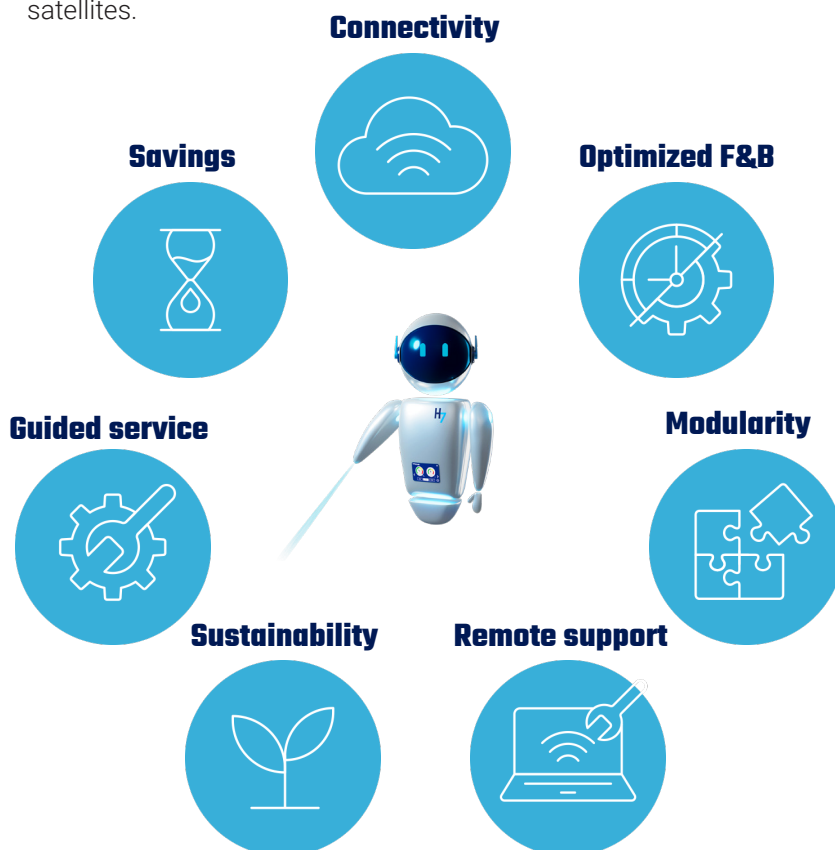
By embracing guided service, remote support and having components optimized to satisfy needs of the food and beverage industry, with this pump stations you will maximize performance, improve energy efficiency, contribute to sustainability, and decrease downtime in your food and beverage production facility.

Hybrid 7 Booster BF16 is a floor mounted pump station, with capacity to supply pressurized water to 16 simultaneous users, operating 16 satellites.

Hybrid 7 Booster BF24 is a floor mounted pump station, with capacity to supply pressurized water to 24 simultaneous users, operating 24 satellites.

Hybrid 7 Booster BF32 is a floor mounted pump station, with capacity to supply pressurized water to 32 simultaneous users, operating 32 satellites.

7 Benefits of Hybrid 7



Nilfisk **FOOD**
nilfiskfood.com

Blytaekervej 2
9000 Aalborg
Denmark

For further information:
Phone: +45 29 69 51 00
E-mail: info@nilfiskfood.com

H7 Multi Booster

Innovative pump stations

General	Unit	BF16	BF24	BF32
Dimensions HxWxD	mm [inches]	1100x554x1006 [43.3x21.8x39.6]	1100x554x1432 [43.3x21.8x56.4]	1100x588x1985 [43.3x23.1x78.1]
Weight	kg [lbs]	190 [419]	300 [661]	400 [882]
IP class		55	55	55

Water

Max. outlet pressure	MPa (bar) [psi]	2+inlet max 2.5 (20+inlet max. 25) [290+inlet max. 362]	2+inlet max 2.5 (20+inlet max. 25) [290+inlet max. 362]	2+inlet max 2.5 (20+inlet max. 25) [290+inlet max. 362]
Operational flow range	L/min [gal/min]	10-440 [2.6-116.2]	10-660 [2.6-174.4]	10-880 [2.6-116.2]
Min. supply pressure	MPa/bar [psi]	0.2 (2) [29]	0.2 (2) [29]	0.2 (2) [29]
Max. supply pressure	MPa/bar [psi]	0.8 (8) [116]	0.8 (8) [116]	0.8 (8) [116]
Min. water supply	L/min [gal/min]	500 [132]	750 [198]	1000 [264]
Max. water temperature	C° [F]	70 [158]	70 [158]	70 [158]
Pipe dimension inlet Ø	mm [inches]	88,9mm [3]	88,9mm [3]	114[4]
Pipe dimension outle Ø	mm [inches]	88,9mm [3]	88,9mm [3]	114[4]
Flange connection (ferrole)		3" EN 1092-1 Type 11/B1 8 Bolts	3" EN 1092-1 Type 11/B1 8 Bolts	4" EN 1092-1 Type 11/B1 8 Bolts

Electricity

Supply voltage	Vac	3/PE 380-528	3/PE 380-528	3/PE 380-528
Frequency	Hz	50/60	50/60	50/60
Motor load	kW	22	33	44
Max. total load	kW	22.5	33.5	44.5
Nominal current	A	55	82.5	110
Fuse	A	63	100	125
Eletrical cable L1, L2, L3, PE	mm2	4x16	4x35	4x50

Output rating

Max. load single output	A	0.8
Max. load sum of all outputs	A	2
Voltage nom.	V	24
Voltage min.	V	22
Voltage max.	V	24.5

Input rating

Input voltage on	V	24
Min. input voltage on	V	22
Max. input voltage on	V	25
Max. output voltage off	V	2

Model	Article no	EBS no
Hybrid 7 Multi Booster BF16	110007208	-
Hybrid 7 Multi Booster BF24	110007209	-
Hybrid 7 Multi Booster BF32	110007210	-



Need more info?

Visit [Nilfiskfood.com](https://nilfiskfood.com) for more details including video tutorials and more.

Nilfisk **FOOD**
nilfiskfood.com

Blytaekervej 2
9000 Aalborg
Denmark

For further information:
Phone: +45 29 69 51 00
E-mail: info@nilfiskfood.com