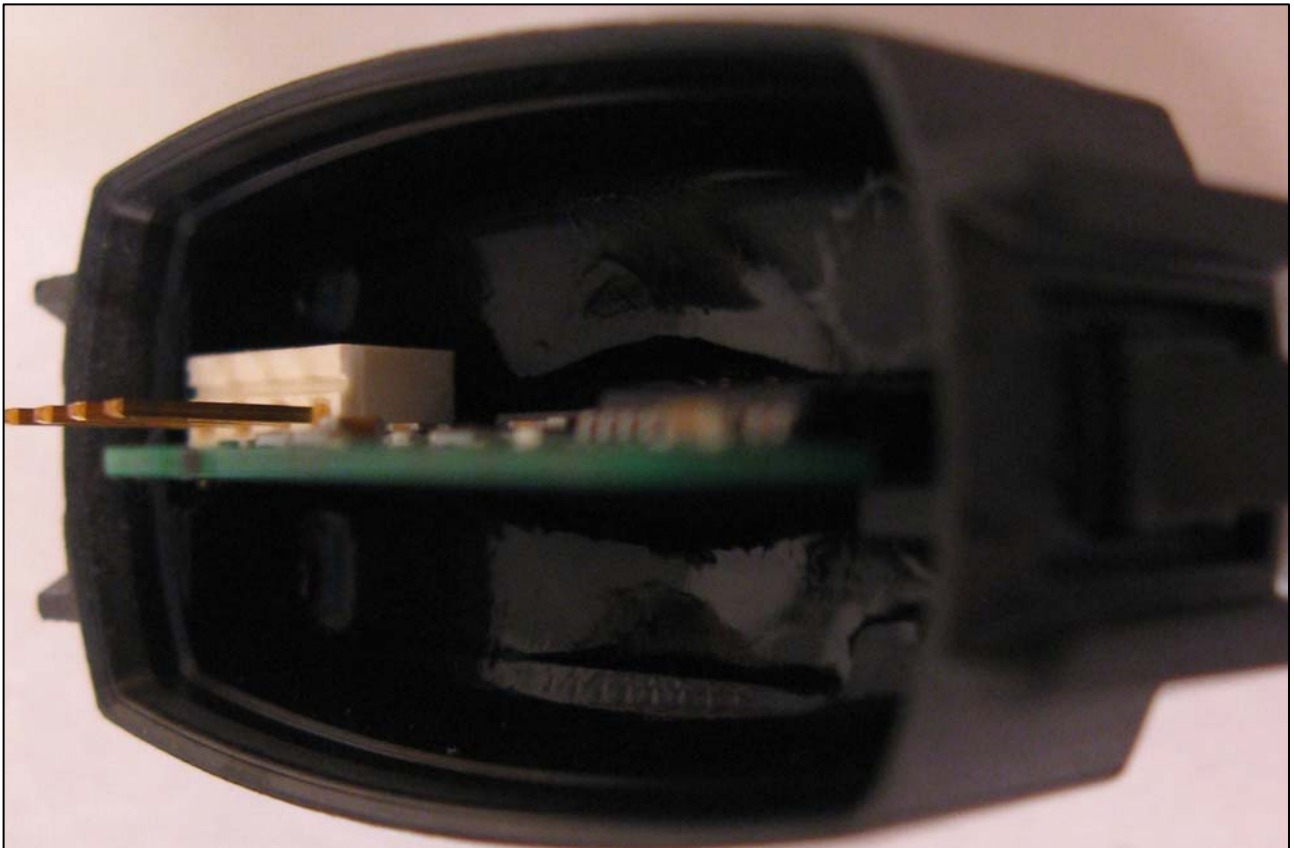


## Service Information No 187

Flow sensor improved with gel  
Model: MM, MP, MA, BW and BF

---

Grundfos, the producer of the sensors used in our Chameleon equipment, has now decided to secure all flow sensors, by applying water proof gel inside the sensor. After more than 4 months of field testing this measure has improved the flow sensor, due to which it has been introduced and used since serial No. 46319 date: 22-04-2009.



Flow sensor 1-20 L Socket No. 8 Cable No. 8 Item No.: 0631059

Flow sensor 2-40 L Socket No. 6 Cable No. 6 Item No.: 0631076 (automatic MA and SA equipment)

Both of these improved flow sensors are now secured with gel, also when ordering spare parts. It is not necessary to change old sensors if these are working well.

All new equipment will be executed with the new sensor. In case of break-down, you can only exchange with the new and improved type of sensor.

Should you need any further information do not hesitate to contact the sales department or the undersigned.

Best regards  
**Nilfisk-ALTO Food Division**

Niels Thygesen  
Sales- and Marketing Manager