

Service Information no. 190

Chameleon automatic Satellites changes to improve the change over system

This Service information covers the following equipment: All SA Satellites!

To improve the change between rinse – foam – rinse we have now made 2-3 different changes:

- The first change is that we have introduced a water limiting nozzle, which will allow “only” 50 L/min at 20-25 bar to pass through the Satellite. This will ensure that the change over function will be more stable. The nozzle will remove the problem to get the system to change from rinse to foam.



Item No. 110000420

Please see mounting instructions on page 2.



- To make sure that there is no “false” electric current in the pipe system which is connected to the Satellite we have also introduced a grounding cable inside the Satellite from the power supply in the electric box and to the body of the Satellite. Please see the mounting instruction on page 3.



Item No. 110000423

- To make it possible to adjust the water flow point where the Satellite must change from rinse to foam we have introduced a new PCB and electric box for the SA satellites. This will normally not be needed in old equipment. If old equipment after changing the first 2 points still cannot change it is recommendable to built in this new electric box with the new PCB with adjustable trickier point.

Should you need any further information do not hesitate to contact Nilfisk-ALTO Food Division sales department, direct tel. No.: +45 7218 2000.

Best regards
Nilfisk-ALTO Food Division

Niels Chr. Thygesen
Dir. tlf.: +45 7218 2006
Niels.christian.thygesen@nilfisk-alto.com

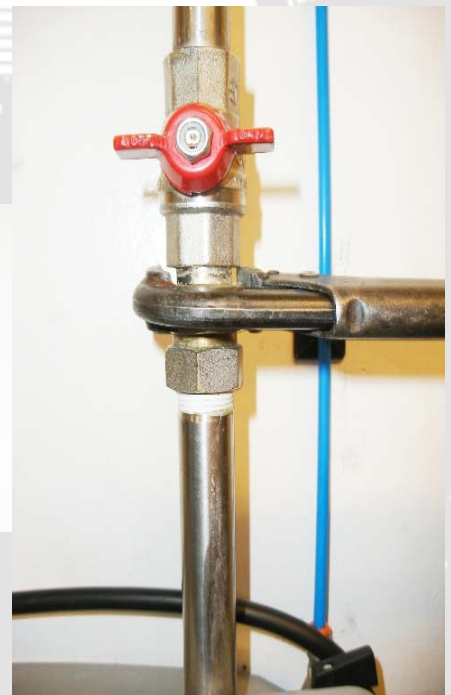
Changes to the Advanced line

Satellite SA – only (On MA's this is
not required)

Nilfisk ALTO

Mechanical change

- Close water supply, disconnect the water pipe at the union
- Mount the flow limitation nozzle inside the union (the nozzle must be pressed or gently hammered until it's fixed)
- Re-mount pipe union and test



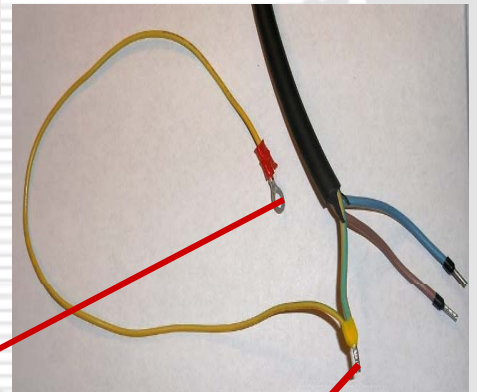
Changes to the Advanced line

Satellite SA – only (On MA's this is
not required)

Nilfisk ALTO

Sensor check

- Check sensor version
- If sensors are of the old version, sensor must be changed



Mounting of ground wire

- Before start working, disconnect main power.
 - Ground wire must be mounted to the GND on the mains supply (primary on PCB)
 - Position the GND label and connect the ground wire to the screw
- Close the PCB box, reconnect main supply and test equipment.

